



# BEDDELEEM

SYSTEM DESCRIPTION V1901



— JB FLUSH



# B



## — JB FLUSH

The JB FLUSH relocatable partition wall is a modular, floor-to-ceiling wall.

By structurally bonding the glass onto an underlying frame, JB FLUSH glazing sits completely flush with the wall. This method provides a wall surface entirely made of glass.

The system partition has a limited number of parts so moving it takes a minimum of time and no specialised tools.

JB FLUSH is an extension of the JB 2000 partition. For the technical performance of the complete wall modules, please consult the JB 2000 partition specifications.



## BEDDELEEM



# — JB FLUSH



## Glazed partition EI00 — EI30 — EI60

In the JB FLUSH partition system, the frame profiles are hidden behind the glass. The adhesive is concealed by a coloured band measuring 25 mm (vertical) and 50 mm (horizontal). This provides a surface made entirely of glass, without profiles, and sitting completely flush with the wall.

### Glass types:

- 2 x clear toughened glass
- 2 x laminated\* glass

\* only available with coloured band in grey or black.

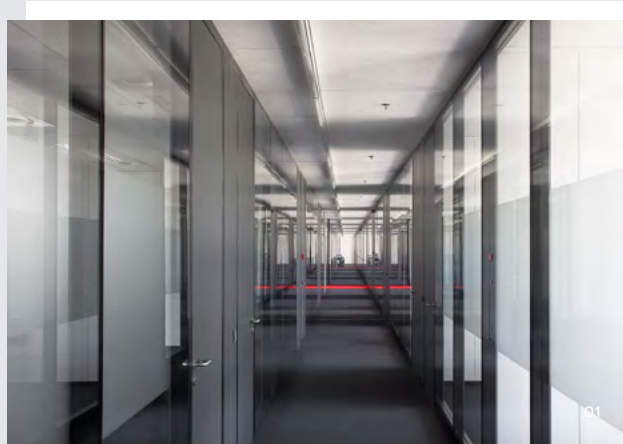




# Unite & combine—

01 —

One-sided flush plain door assembly



Wooden door leaf of which the front face is flush with the door frame. This results in a very sleek, minimalist door assembly.

02 —

Two-sided flush glazed door assembly



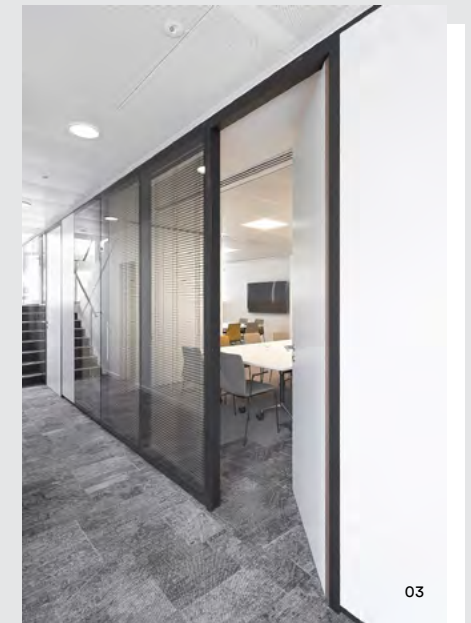
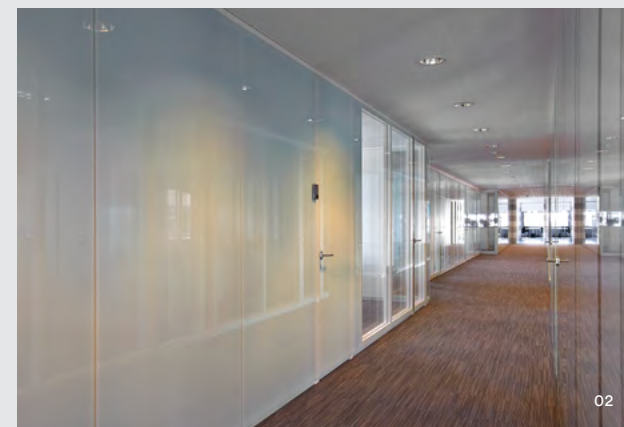
The door leaf is flush with the partition on both office and corridor sides.

03 —

Venetian blinds

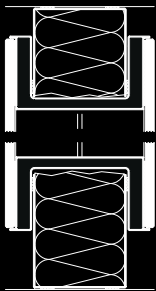


A venetian blind can be hung between the two window frames. Knob operation is standard. The knob is used to adjust of the slat position.

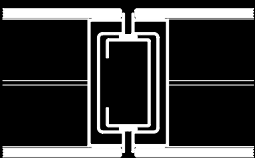




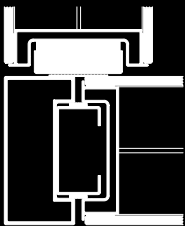
# JB FLUSH technical details



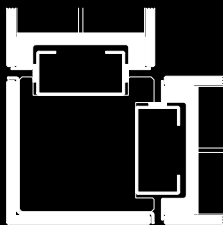
Vertical cross-section



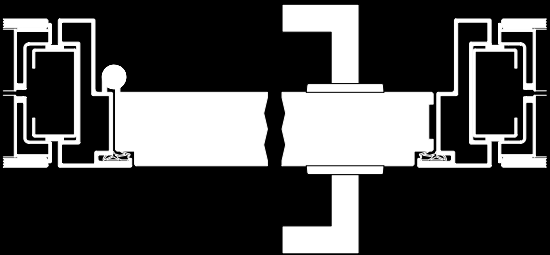
Horizontal cross-section



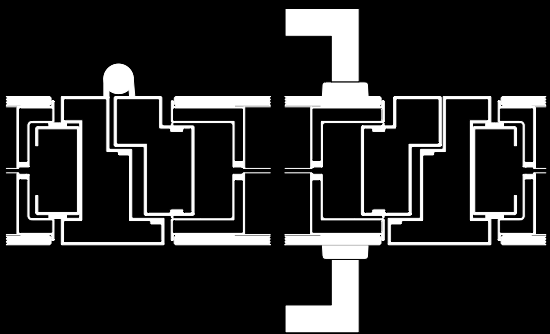
90° corner



90° corner with bonded glass



One-sided flush plain door assembly



Two-sided flush glazed door assembly



PRODUCT INFORMATION

DOORS

All doors from the JB 2000 partition system are compatible with the JB FLUSH partition system.

With a one-sided flush door assembly, the door leaf lies in the same plane as the corridor side of the wall. The door leaf is 50 mm thick and you can choose between a finish in hard laminate or veneer.

With a two-sided flush door assembly, the door leaf lies in the same plane of the corridor side and the office side. The door leaf is 100 mm thick and consists of an aluminum frame with thermally hardened glazing.

For the other possibilities we refer to the system description of JB 2000.

PARTITION WIDTH

The standard module for this partition is 1200 mm.  
(Other modules available on request)

PARTITION HEIGHT

Partition height can be up to 3000 mm in one panel.

PARTITION THICKNESS

The partition thickness is 100 mm.

BUILDING TOLERANCES

Despite the narrow profiles the system can cope with the following building tolerances:  
± 15 mm for the floor  
± 15 mm for the ceiling

WEIGHT

JB FLUSH EI00 6+6                      ca 30kg/m²

PAINTWORK

All visible profiles are available in a choice of RAL colour. Ask for our sample card for the most recent range.

REACTION TO FIRE

The JB FLUSH glass partition is non-flammable, Class A1 in accordance with EN 13501-1 and meets the highest classification for reaction to fire.

FIRE RESISTANCE

The JB FLUSH system is available with fire resistance classes EI30 and EI60. Window assemblies are available with fire resistance classes EI30 and EI60. Door assemblies are also available with fire resistance class EI30.

To achieve the necessary fire resistance class, a number of changes have been made as compared with the EI00 partition.

The EI30 and EI60 JB FLUSH glass partitions have almost the same features as the EI00 wall. However, in this instance the screened band measures 50 mm. Fire resistance is obtained by the addition of centrally positioned fire-resistant glazing. This increases the thickness of the EI60 partition to 114 mm.

These changes are described in detail in the separate test reports.

ACOUSTICS

The acoustic tests are conducted in accordance with the standard EN ISO 140 or EN ISO 10140. The acoustic performance is displayed with the single number rating according to the NBN EN ISO 717-1, and with the class according to the NBN S01-400.

Glazed partition

	NBN S01-400	NBN EN ISO 717-1 (Rw)
G40 EI00	IVa	40dB
G45 EI00	IIIb	45dB
G46 EI00	IIIa	46dB
G48 EI00*	IIb	48dB

\* calculated value

Door assembly\*

	Door leaf	NBN S01-400	NBN EN ISO 717-1 (Rw)
DGV2	50 mm drop seal	IVa	40dB
DGG²	GD 6+6 drop seal	IVa	42dB

\* In combination with a partition

Note: All certificates available on request

CRADLE TO CRADLE

The JB 4000 system is available as Cradle to Cradle™ Silver with toughened glass and as Cradle to Cradle™ Bronze with layered glass.

Available in following colours: RAL 9005 Jet Black, RAL 9006 White Aluminium, RAL 9016 Traffic white, RAL 9004 Signal black and RAL 7022 Umbra grey.



The secret of good architecture is having more than meets the eye

Annabelle Selldorf

# BEDDELEEM

Venecoweg 14A, 9810 Nazareth  
T +32 9 221 89 21 — F +32 9 220 26 25  
E [info@beddeleem.be](mailto:info@beddeleem.be)

[BEDDELEEM.BE](http://BEDDELEEM.BE)

